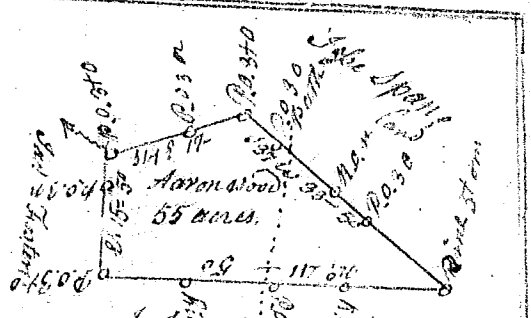
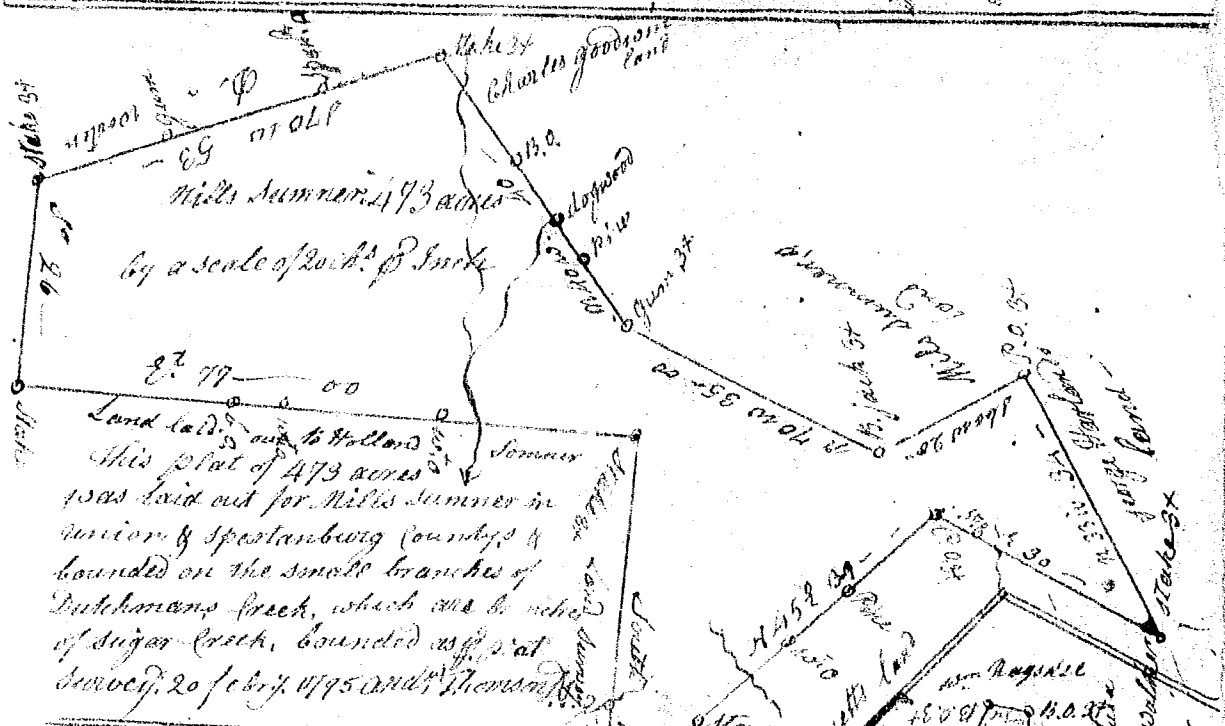
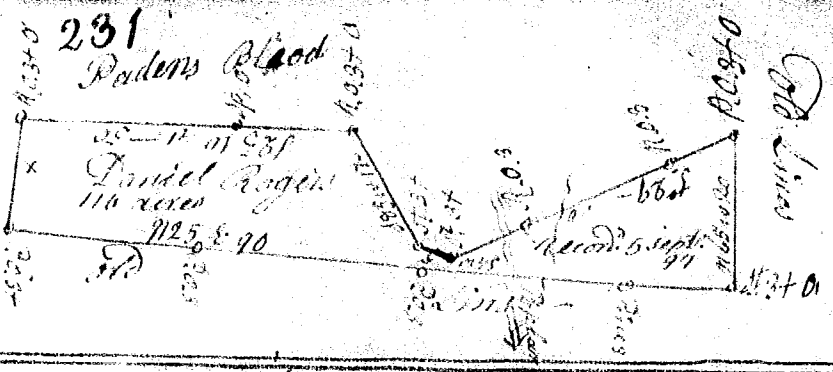
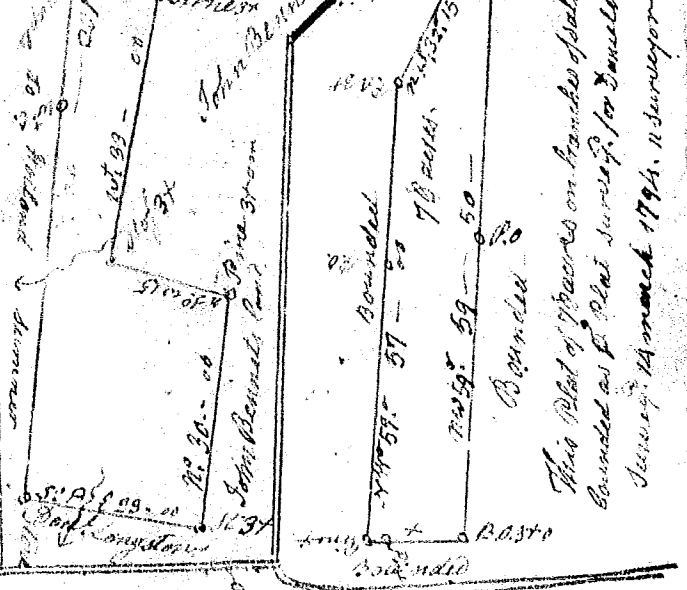


This plat of 116 acres  
 laid out for Daniel  
 Rogers in Spartanburg  
 County on the branches  
 of Sugar Creek, bounded as  
 sp. Plat Survey of Sept.  
 1777. See Wofford D.S.



John Hostler's land  
 This plot was laid out for John  
 Hostler of 55 acres, near the head  
 branch of Sugar Creek, bounded  
 as sp. Plat Survey of 27 Feb. 1775  
 Wofford D.S.



This plot laid out for Sept  
 Gordon of 100 acres, bounded as  
 sp. Plat Survey of 1777  
 by James Nelson  
 November 13, 1778

